

PART OF SECTIONS 29 & 32, T.7N., R.1E., S.L.B. & M.

NORDIC VALLEY ESTATES NO. 1

LOTS 10 – 21

IN WEBER COUNTY

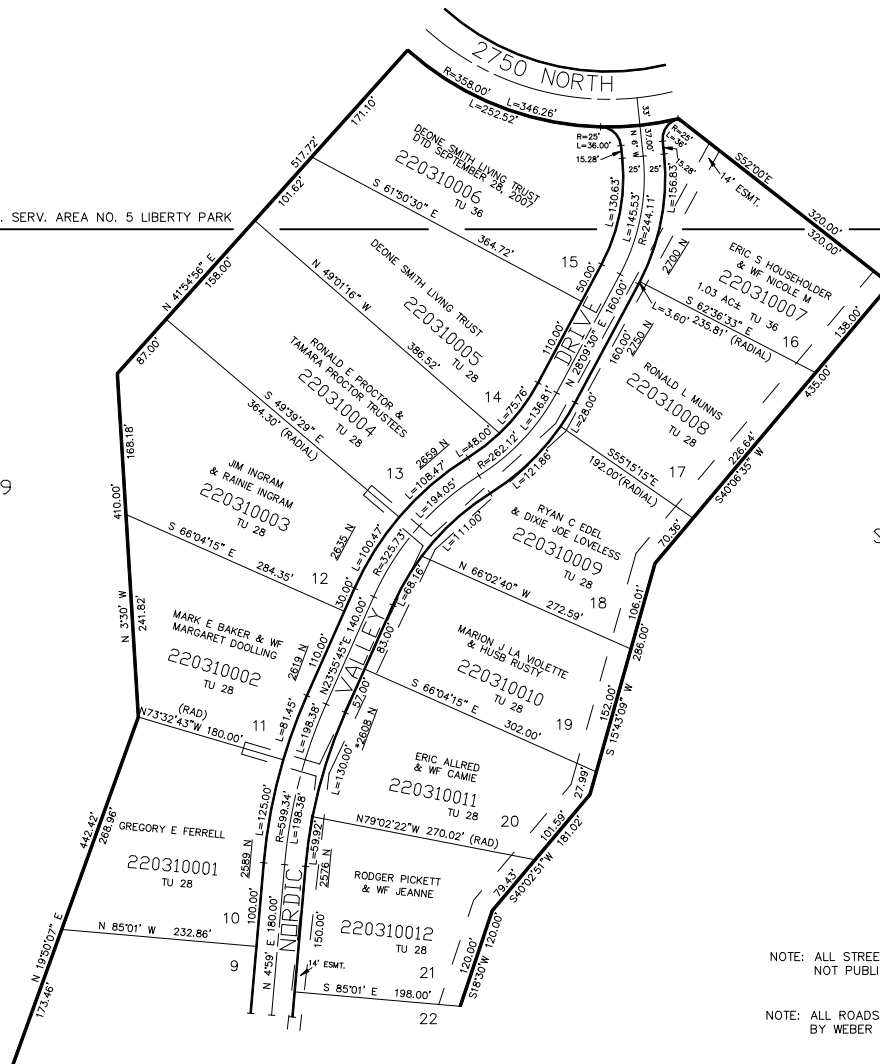
SCALE 1" = 120'

TAXING UNIT: 28, 36

SEE PAGE 23-3

SEE PAGE 29

SEE PAGE 54



SEE PAGE 30

NOTE: ALL STREETS ARE PRIVATE R.O.W.,
NOT PUBLIC THOROUGHFARES

NOTE: ALL ROADS IN THIS SUBDIVISION ARE OWNED
BY WEBER COUNTY SEE 22-030-0018

FOR COMPLETE ENG DATA SEE
ORIGINAL DEDICATION PLAT IN
BOOK 15, PAGE 89 & 90 OF RECORDS.

*ADDRESS AFFIDAVIT E#3311673

25' UTILITY & DRAINAGE EASEMENTS EACH
SIDE OF PROPERTY LINES AS INDICATED
BY DASHED LINES EXCEPT AS OTHERWISE
SHOWN.

FOR TAX PURPOSES ONLY